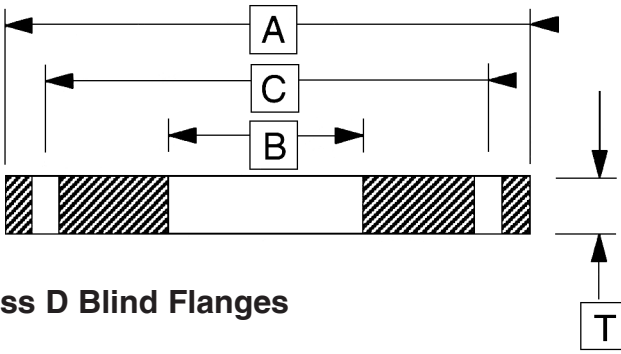


AWWA CLASS D FLANGES



For Class D Blind Flanges



No. 2108

AWWA Class "D" Steel Flanges

NOM. SIZE	"A" O.D.	"T" THICKNESS	"B" BORE	NO. OF BOLT HOLES	DIA. OF BOLT HOLES	"C" BOLT CIRCLE	WEIGHT
4"	9"	5/8"	4.57"	8	3/4"	7-1/2"	7.8
4"	9"	5/8"	4-1/16"	8	3/4"	7-1/2"	7.8
5"	10"	5/8"	5.66"	8	7/8"	8-1/2"	9.0
5"	10"	5/8"	5-1/16"	8	7/8"	8-1/2"	9.0
6"	11"	11/16"	6.72"	8	7/8"	9-1/2"	10.0
6"	11"	11/16"	6-1/16"	8	7/8"	9-1/2"	10.0
8"	13-1/2"	11/16"	8.72"	8	7/8"	11-3/4"	15.0
8"	13-1/2"	11/16"	8-1/16"	8	7/8"	11-3/4"	15.0
10"	16"	11/16"	10.88"	12	1"	14-1/4"	22.0
10"	16"	11/16"	10-1/16"	12	1"	14-1/4"	22.0
12"	19"	13/16"	12.88"	12	1"	17	36.0
12"	19"	13/16"	12-1/16"	12	1"	17	36.0
14"	21"	15/16"	14.13"	12	1-1/8"	18-3/4"	48.0
16"	23-1/2"	1"	16.13"	16	1-1/8"	21-1/4"	63.0
18"	25"	1-1/16"	18.13"	16	1-1/4"	22-3/4"	65.0
20"	27-1/2"	1-1/8"	20.13"	20	1-1/4"	25"	85.0
24"	32"	1-1/4"	24.13"	20	1-3/8"	29-1/2"	105.0
30"	38-3/4"	1-3/8"	30.13"	28	1-3/8"	36"	170.0
36"	46"	1-5/8"	36.19"	32	1-5/8"	42-3/4"	265.0
48"	59-1/2"	1-3/4"	48.19"	44	1-3/4"	56"	428.0

